

Glenorchy Community Care

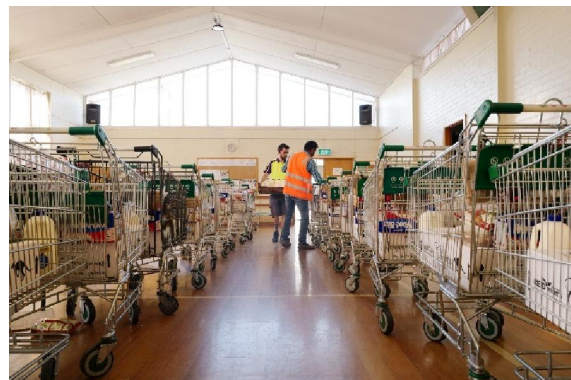
Food Distribution

– Information For Volunteers

Glenorchy Community Care is a supply of food for disadvantaged people living in the Northern Suburbs.

Information for Volunteers

- We need volunteers
- Attend Thursdays
8:15am* to 11:15am (*8:00 start if possible)
- At the **Glenorchy Uniting Church Hall,**
21 Kensington Street Glenorchy
- We want volunteers with a servant heart
- Program begins with prayer
- Not just about food but relationship – Volunteering is fun !
- Volunteers who are eligible can pay \$30 handling fee to take a trolley too
- You need Working with Vulnerable People Card
(This is easy to apply for at Service Tasmania)
- Train on the job
- Volunteer roles include: Unpacking food / Serving clients / Client Registration and Ticketing / Food bagging / Pack up / Waste Disposal



Please Contact:

Marilyn Goninon

Vice President

marilyn.goninon@gmail.com

0418123530

Glenorchy Community Care Inc

glenorchycommunitycare@gmail.com

Graham Legg

President

graham.legg@bussofttas.com.au

0412416399

An initiative of the Churches of Glenorchy